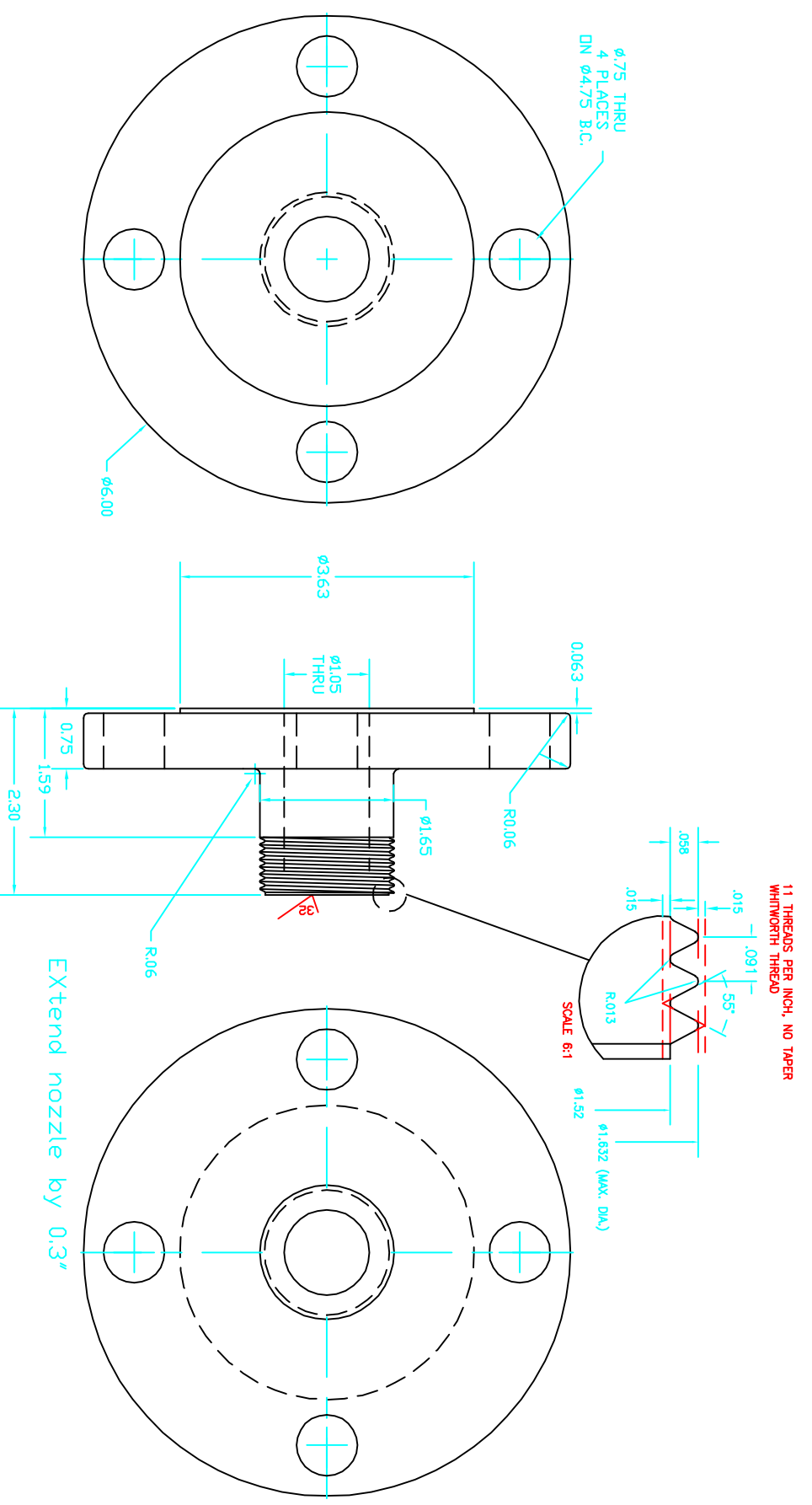


EXCEPT AS MAY BE OTHERWISE SPECIFIED BY CONTRACT, THESE DIMENSIONS AND SPECIFICATIONS ARE THE PROPERTY OF "ALUMINUM SCIENTIFIC, INC." ARE USED IN STRICT CONFIDENCE, AND SHALL NOT BE REPRODUCED, COPIED, OR USED AS THE BASIS FOR THE MANUFACTURE OR SALE OF APPARATUS WITHOUT PERMISSION.

REVISIONS				
ZONE	REV	DESCRIPTION	DATE	APPROVED
1	1	EXTEND NOZZLE 0.3" TO GIVE SENSOR MORE ROOM, 2.0" TO 2.3" OVERALL	12JAN07	AJF



MAKING PART WITH WHITWORTH THREAD (B440-039) IS AVAILABLE FOR TEST FLT.

MATERIAL		UNLESS OTHERWISE NOTED:		APPROVALS		TITLE	
304 SS		DIMENSIONS ARE IN INCHES		SIGNATURE & DATE		D-2 INCORPORATED	
FINISH		RESISTORS ARE IN INCHES		DRAWN		FLANGE, 2" PIPE ANSI B16.5,	
125 UNINCH		CAPACITORS ARE IN MICROFARADS		CHECKED		CLASS 150 TO WHITWORTH THREAD	
EXCEPT AS		TOLERANCES		MECH		CAGE	
NOTED		DECIMALS		ELECT		4EKX8	
		FRACTIONS		SYSTEM		DRAWING NO.	
		ANGLES		REMOVE BURRS, BREAK SHARP EDGES		C441-084	
		DO NOT SCALE PRINT				REV	
						1	